



Carbon Capture Gardening

Echo Eternal Curriculum Garden

Weather report.....

Well, we commented in the autumn newsletter that the September temperatures were far from the norm and so it has proved with official notification that September was the warmest on record in many parts of the world. These ever - changing weather patterns are proving to be challenging to say the least.....Nature will ultimately prevail.....

Fantastic News!

We are pleased to announce that Subway will be continuing their support of the schools growing work – we are once again very grateful for the support that Mr Daljit Nahil has provided for many years now.....

Watch these pages to see what we look to develop next in the garden.....

Subway continue to support our schools growing work



Schools growing work

Borage is still flowering.....

A flower that normally, whatever normal means now, will have ceased flowering before October – we still have plenty of borage still in flower which is still attracting lots of bees, the bees are still active building up the reserves in the hive in readiness for when the colder weather finally arrives.



Borage

[Star Flower]

Borage or Star Flower as some people call it.

All parts of this herb are edible with the leaves tasting like cucumber.

Heathers planted.....



We have planted up some winter colour in the form of heathers, winter pansies and primroses which we hope will brighten up the front entrance to the garden.....

Winter pansies and primroses..



Signs of autumn.....

Although we are still experiencing some balmy temperatures as we move towards the middle of October, there are some tell – tale signs that we are into autumn, not least acorns and horse chestnuts [conkers] coming down, plus there are more leaves either changing colour or actually falling.....

Also, there are plenty of autumn flowers displaying their colours.....

Here you can see some of our sedum plants giving us some autumn colour.



Cooler temperatures are coming.....

The weather forecast for the next week or so[October 14th onwards] is telling us that the weather is going to be more in line with the “normal” temperatures that we experience at this time of the year including the possibility of the first frost – as soon as we read this, it is time to spring into action to protect any plants and fruits that are likely to suffer as a result of frost damage. Here you can see the biggest of our pumpkins that we have harvested and moved indoors to protect it from any frosts.....



Pumpkins aplenty.....

Here is a selection of our Atlantic Giant Pumpkins that have been harvested Some decent sizes as you can see.....



Atlantic Giant Pumpkins

Helping others.....

Our pumpkins have been put to good use by way of helping others.

Not least, two of the pumpkins have been delivered to Langar Aid to help with feeding the homeless.....

Another pumpkin has gone to the children in Reception Class down at Parkgate Primary School so they can make pumpkin soup.....

Plus another one has gone to the 13th Coventry Scout Group to help with their Halloween activities.....

Tender tropical plants need protection.....

Now it seems like we are getting more seasonal temperatures, it is now the right time to move our tropical plants into more sheltered areas, so with this in mind we have moved our banana plants indoors along with some other tropical plants that we have been growing outdoors.....

Some of these plants will tolerate some cold weather, but any prolonged cold spells with frost or dare I say it snow, then they will not survive.....

Here you can see one of banana plants – *Ensete ventricosum* or the red abyssian banana. The leaves as they unfurl are a stunning deep red colour.



Ensete ventricosum.....

More tropical plants that need protection.....



Stunning leaf colouring's on these Colocasia plants.....

Another banana variety.....



Musa Basjoo....

Here you can see another variety of banana that we have growing in the garden – again, with the winter months approaching, we have moved this plant indoors to protect it from any frost.....

Also, you can see that this plant has lots of new growing shoots which if we split these off very carefully we will be able to pot these up to give us some new “free” banana plants next spring....

More areas being developed.....

This area in our Echo Eternal Curriculum Garden does not look much at the moment, but come the spring this area will hopefully look or will start to look very different. Preparatory work is currently underway.....

Watch for the developments to this area.....



Another area for development.....

This is another area that is being prepared for new developments.....

Right now, it looks very uninspiring, but after strimming the long grass and removing some of the invasive weeds, the next job for this area is to dig some planting holes – what will be planted here will be revealed next month [November.]

Watch this space.....



Smart Learner supporting President Kennedy School...

We are indebted to the support that the Smart Learner Driving School has afforded the school in recent years with over 50 flowering cherry trees planted all funded by Smart Learner, plus there is another significant development in the pipeline which will be announced next month.....

Watch out for the details on this latest project within the garden.....

SMART L EARNER



02475 092 784



www.smartlearner.com



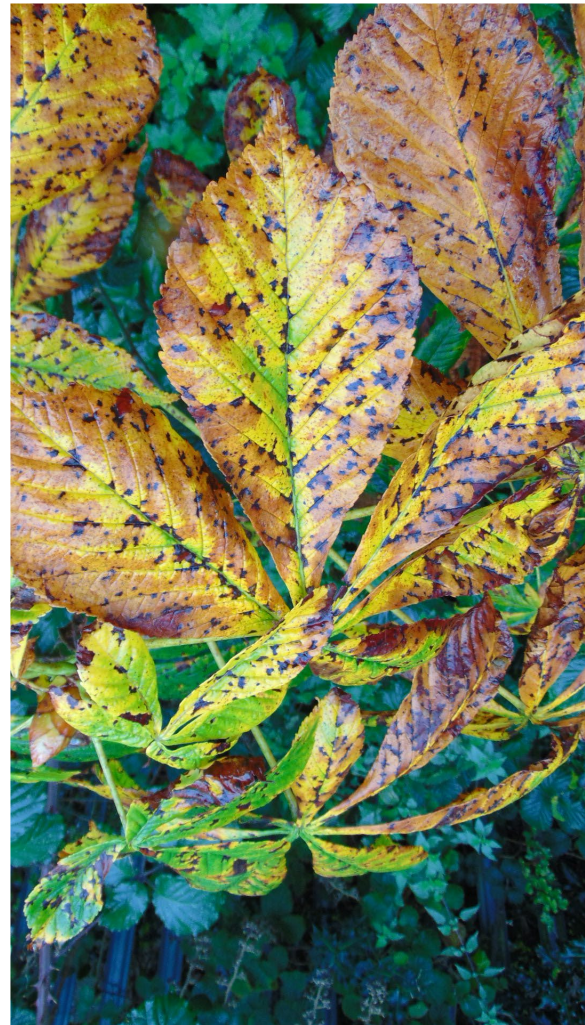
4 Wheelwright Buildings
Hen Lane, Coventry CV6 4LB



Tell - tale signs of autumn.....

Although the temperatures are still not very cold, there are still some tell – tale signs that we are into autumn, with the decrease in daylight hours particularly now that the clocks have changed leaves are rapidly changing colour and falling to the ground. Simply put, green plants need sunlight to produce their own food, when the daylight hours decrease, this is a sign for a green plant to shut down and basically rest before springing to life again come the spring. This is when we see leaves falling.....

Here you can see the horse chestnut leaves in our garden that are changing colour dramatically before falling to the ground.....



**Spectacular
Autumn
Colours.....**

Garden sustainability.....



COMPOST

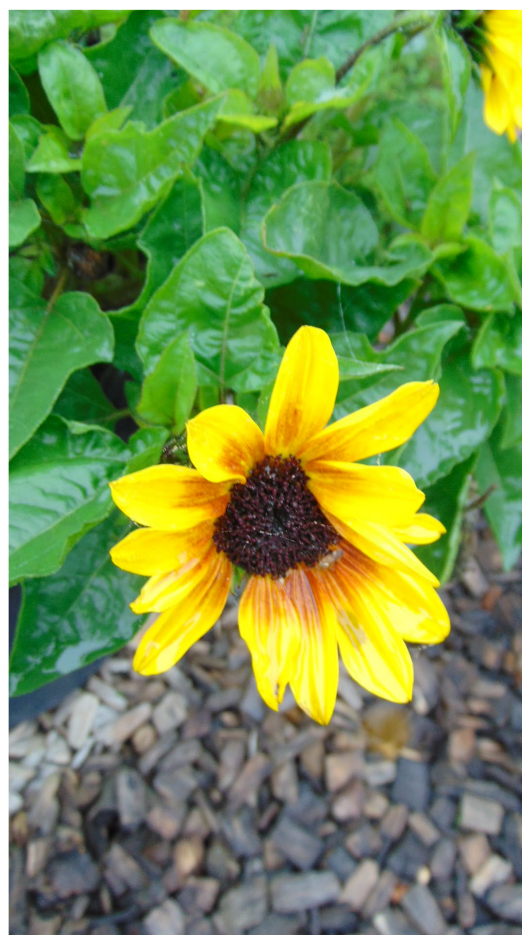
New Compost Bays Built.....



With the big garden space that we have, this naturally creates plenty of green waste, so, with the ever spiralling cost of compost this green waste can be turned into making our own compost – given the right mix of both green and brown material we can turn our waste material into our own compost..

Also, we can utilise the plentiful supply of leaves that the school site provides, collect up the leaves, keep them in a bay and then allow nature to get to work so as they break down they turn into leaf mould.

Super autumn colour.....



The sunflowers that are in the photographs shown above, yes, they are sunflowers, they are a variety called “sunbelievable,” which just keeps on flowering, indeed, these photographs were taken at the very end of October giving us some much needed cheer in the garden.

We will endeavour to save some seeds so that we can grow more new plants in readiness for next summer.....

Sunflower
“sunbelievable”